



st michael's
hospice

Open Gardens guide

May - August 2026

Throughout Hastings and Rother.



stmichaelshospice.com
Registered charity number 288462

Kindly sponsored by,

BOOKER & BEST LTD.

Welcome

Welcome to St Michael's Hospice Open Gardens 2026. I hope you have a wonderful time exploring the amazing gardens this season.

Our Open Gardens raise vital funds which help us continue to support and enable the community of Hastings and Rother to live well with dying, death and loss.

To allow us to grow the programme and ensure its sustainability in future years you'll see some

small changes to our Open Gardens this year, with some hosts kindly arranging refreshments themselves.

I'd like to personally thank all the 2026 garden hosts, the volunteers for their continued support, as well as everyone who visits to enjoy the wide variety of gardens whilst supporting the work of the Hospice.

Best wishes,
Dr Karen Clarke
Chief Executive



Contents

May

Mountfield	8
Northiam	9
Sedlescombe	12

June

Winchelsea Beach	15
Battle	20
Winchelsea and Rye	22
Bexhill Old Town	25

July

Cooden Beach and Little Common	28
Hastings	31
St Leonards on Sea	32

August

Sandhurst	37
-----------	----

Useful information

- The garden hosts kindly welcome you to enjoy their gardens, so please respect them by taking away your rubbish and following the marked routes.
- This year, we've made some changes to our events, which means that some of the garden hosts will be providing refreshments, instead of the Hospice, so you can expect a wider variety throughout the season. We're very grateful for the hard work and support of our garden hosts.
- Unfortunately, not all gardens are suitable for wheelchair access. We want you to enjoy your time, so please call us on **01424 456396** to talk this through with a member of the team.
- Parking isn't always guaranteed and your vehicle is left at your own risk. Please park with consideration to other road-users and pedestrians.
- Children are always welcome, but please make sure they're always under your supervision.
- If you'd like a cutting or some seeds, please ask the garden hosts, rather than helping yourself.
- Some of the details in this booklet may change along the way – due to weather or unforeseen circumstances. Please check our website for any changes before heading off.
- Maps are available to download from our website, which show where each garden is located. A limited number of printed maps will be available on the day.
- Last entry to each garden is at 3pm.

How to buy your ticket

Get ahead of the crowds by booking your ticket online using the QR code (stmichaelshospice.com/event-diary) or by calling **01424 456396**.

Tickets can also be purchased on the day at all gardens taking payment (see the symbol key on the next page for more information).

You will have access to all the gardens open on the day of your ticket purchase.

Plus, you can buy a season ticket at any time. It's valid for a full year from the day you purchase it, so any gardens that fall within that 12-month period, even those in our 2027 season, are included.

Under 16s go free.

If you have a question that isn't answered in this guide, please email fundraising@stmichaelshospice.com or call **01424 456396**.



Symbol key



All gardens with this symbol have refreshments available to purchase in aid of the Hospice.



Every place with this symbol has toilets available. Please call **01424 456396** to check if the toilets have disabled access.



You can pay for your ticket at any of the gardens with this symbol.



You cannot pay for your ticket at any garden with this symbol. Please either buy your ticket online or go to another garden in the area that will take payment.



Any property with this symbol will allow well behaved dogs on leads into their garden.

See parking information at each location for details about where to park.

About us



Did you know that we're a charity?

Although our services are completely free, it costs over £9.4 million a year to run the Hospice. The NHS covers just 28% of that.

The rest is donated by our generous community, through fundraising, sponsorships, our lottery, shop sales, gifts in Wills, grants from trusts and foundations, as well as coming to events like our Open Gardens.

Find out how you can support us by scanning the QR code, visiting stmichaelshospice.com/donate or calling **01424 456396**.



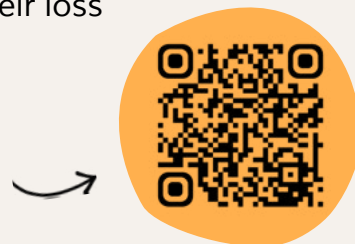
Your hospice, your care.

We support anyone in Hastings and Rother over the age of 18 to live well with dying, death and loss.

Whether someone is living at home or staying on the In-Patient Unit, our teams work together to offer personalised medical, physical, spiritual, social and emotional support to help people live well with life limiting illnesses.

Our Bereavement Service offers support to anyone struggling with grief, whether or not their loss is connected with the Hospice.

Visit stmichaelshospice.com/services or scan this QR code to find out about all the services we offer.



Tuesday 5th May Mountfield

£5 | 10.30am – 4pm

Parking information

Follow signs to available parking in nearby field.



Mountfield Court

Robertsbridge, TN32 5JP.

Simon and Lucinda Fraser

Mountfield Court Garden is a unique three acre woodland garden planted over five generations of the same family with rhododendrons, azaleas and specialist trees. Extensive paths through woodland lined with bluebells, beautiful views and a small paved herb garden.



Pictured: Mountfield Court.

Saturday 16th May Northiam

£7.50 | 10.30am – 4pm

Parking information

There's a free village car park in Northiam, opposite Westwell House.

Find our pop-up shop here.



Westwell House

Main Street, TN31 6NB.

John and Patrick

This is a woodland garden, which leads to a large pond and formal flower, fruit and vegetable areas, as well as a sunny meadow. There are many places to sit and enjoy the scents and views.



Northiam Conservation Society Community Orchard and Nuttery

Main Street, TN31 6NA.

Northiam Conservation Society

This calming garden, situated within the busy village, offers an orchard of over 60 trees – mainly local heritage varieties planted in 2022 and now a cluster of young hazelnut and almond trees in the Nuttery. Come and sit among the trees, and enjoy the views.

Pictured: Westwell House.

New for 2026



Dewmory

Ewhurst Lane, TN31 6PA.

Martin and Pam Carey

A pretty country-style front garden with beautiful flower beds – a lovely spot for refreshments.



24 Coplands Rise

TN31 6PU.

Kieron Adams

A cottage garden of colourful perennials, shrubs and a large collection of roses and clematis. It includes a potting shed, a summerhouse, a pergola and raised beds.

Pictured: left, Dewmory, right, Friars Cote.

New for 2026



Friars Cote

Crockers Lane, TN31 6PY.

Rainer Pratl and Andy Hawkins

This one and a half acre mature garden surrounds an Art Deco style house with an orchard. The heavy clay makes it easy for rhododendrons and camellias to thrive. The garden features an 80ft long border and a panoramic view of the Weald.



Rose View

Quickbourne Lane, TN31 6QY.

Susan Dutfield

This wildlife focused garden is a beautiful hidden gem. With ducks and chickens, plus a garden studio. This is a wildlife advocate's dream.

Pictured: Friars Cote.



Saturday 30th May Sedlescombe

£7.50 | 10.30am – 4pm

Find our pop-up
shop here.



Parking information

On-field parking (weather dependent) off of Ladybird Lane near Chapel Hill, and by Coach House Cottages.



Old Orchard

Chapel Hill, TN33 0QX.

Keith and Clare Saunders

This is a sloped garden, developed over the last five years. It has cottage garden style planting with unusual rockery.



Luffs Farm

Chapel Hill, TN33 0QX.

Amanda and Neil Pollard

This is a farmhouse garden with traditional herbaceous borders, a rose border, vegetable and flower patches and a small orchard. An exciting new woodland area is currently in development.

Pictured: Luffs Farm.



2 The Old Tanyard

TN33 0FJ.

Tina and Chris Fowler

An informal country garden, taking you on a journey through a large seating area along a path to a small woodland. Much has been done since the owners bought the property five years ago, but it's still a work in progress with much more to come.

New for 2026



4 The Pollards

The Street, TN33 0QB.

Karlon and Susan Batehup

This surprising new secret garden is a gem of an unexpected space. Come along to see what it has to offer.



The Haven

Sandrock Hill, TN33 0QR.

Stella and Dave Brabants

The Haven is a natural looking garden on three levels with interesting trees and a large Koi pond.

Pictured: 2 The Old Tanyard.



1 Coach House Cottages

Hurst Lane, TN33 0PE.

**Eric Foex and
Brendan Commane**

This three acre garden, which has been developed over the past 20 years, holds a wide variety of plants from all over the planet. It has a large 18th century wall, a stream and a sizeable pond, which is a haven for wildlife.



2 Coach House Cottages

Hurst Lane, TN33 0PE.

Debby Lennard

This mixed garden has something for everyone. The vegetables and fruit grow alongside shrubs and plants, whilst a wildlife pond provides a central focus.



Pictured: left, 2 Coach House Cottages, right, 1 Coach House Cottages.

Saturday 6th June Winchelsea Beach

£7.50 | 10.30am – 4pm

Find our pop-up shop here.



Parking information

Car park at Village Hall, and on-street parking available in Sea Road. Due to the nature of the area, we suggest you tour on foot.



Winchelsea Beach Community Hall

Sea Road, TN36 4NA.

Please use the carpark at the Village Hall. There will be refreshments and access to toilets here.



Stargazer

Morlais Place, TN36 4LG.

Stephen and Celia King

A medium sized garden that constantly evolves over time with some new features. Heavy clay soil has been worked into a cottage style haven for wildlife, a mass of roses and a garden that is much loved, and full of colour. Plus a front garden with more to offer.



Pictured: Stargazer.



White Cove

Sea Road, TN36 4LH.

Pat Littleboy and Pauline Mackay-Danton

This garden has been transformed over the last nine years by the owners into a butterfly and bee friendly area, with work in progress on the ten raised vegetable beds. A large variety of birds and other wildlife visit the garden from the sanctuary of the adjoining woodland – it's a tranquil refuge.



Solstice

Sea Road, TN36 4LH.

Mary Parker

Solstice has a small front garden and a surprisingly large back garden with a vegetable patch and mini orchard. There is also a grassy area and a few flower beds, a pond, a patio and some decking with plants in containers. Although it's not a show garden, it is neat and tidy.

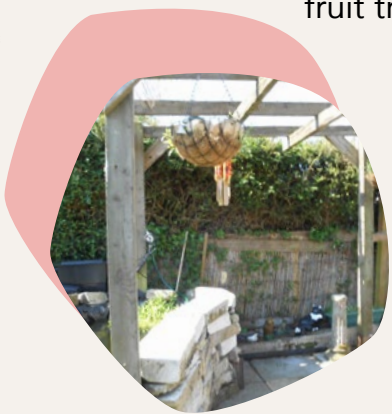


Seagulls

Smeatons Lane, TN36 4LW.

Elizabeth Højlund

This garden has been created on a bed of shingle, so has mostly shrubs around the two areas of lawn, with a number of native plants and a small flower bed.



St Valery

The Ridge, TN36 4LT.

Anne Rebecca Højlund, Nicholas Norton and William, Elfrida and Audrey

This small garden wraps around the entire house with plenty of surprises including some quirky little buildings and sheds, as well as an 1880s guardsman railway carriage. The beds are being remodelled this year and include flowering shrubs and small fruit trees.



Windjammer

The Ridge, TN36 4LU.

Malcolm and Eileen Ede

In this garden, traditional flower beds sit alongside the original shingle garden. Raised vegetable beds and a working greenhouse sit at the bottom of the garden. Also featured are two ponds. The upper, smaller pond is planted with bog plants, and the lower larger pond houses beautiful koi fish.

Pictured: left, Solstice, right, Seagulls.



Our upcoming event diary

Remembrance Ribbons
June – July

Rye and District Country Show
17th August

Lego Walk
13th September

Moonlight Walk
26th September

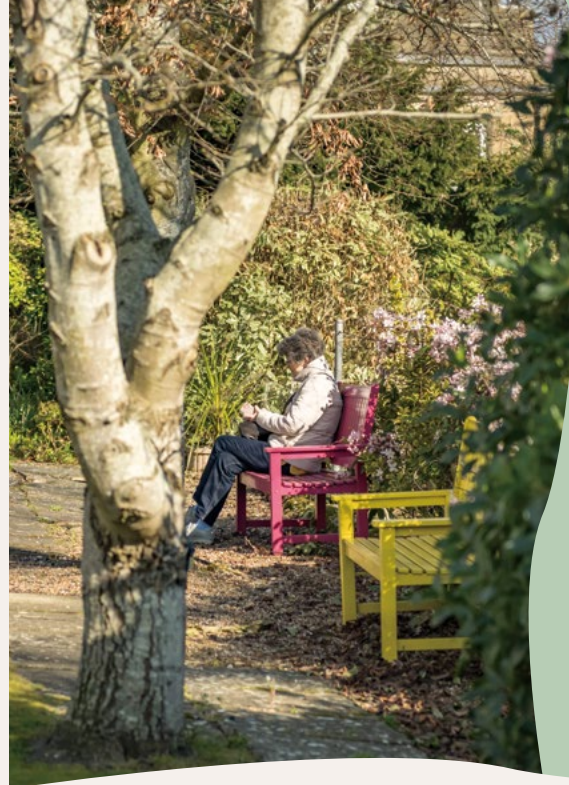
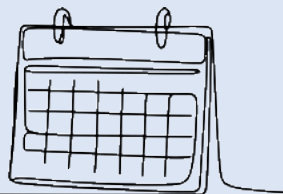
Big Sing
10th October

Lights of Love
29th November – 6th December

Christmas Markets
14th and 15th November

2027
Christmas tree recycling
January

Hospice Run
31st January



Gifts in Wills fund **1 in 4** patient's care.

Leave a lasting gift of compassion and care.

Visit stmichaelshospice.com/giftsinwills to discover how to leave a gift in your Will.

Shop with us

If you've loved our retail pop-ups, why not visit one of our seven shops across Hastings and Rother?

Visit stmichaelshospice.com to find your nearest shop, filled with pre-loved treasures.

Prefer browsing online?
Scan the QR code to start shopping with us today.



Saturday 13th June Battle

£7.50 | 10.30am – 4pm

Find our pop-up
shop here.



Parking information

Pay and display car parks in Town Centre (Mount Street and Market Road), plus on-street parking available near all gardens.

New for 2026



The Lodge

Glengorse, TN33 0TX.

Pam Robbins

The Lodge is a mature garden with a large patio, trees, shrubs and colourful flower beds.



Barrack Farm

Caldbec Hill, TN33 0JR.

Alan and Anne Gavin

A medium sized garden with a mix of colourful annuals, perennials and shrubs.

New for 2026



6 Glengorse

TN33 0LJ.

David and Barbara Brooks

A cottage style garden with mature specimens and winding paths. There's a small pond, summerhouse and a greenhouse.



Pictured: 6 Glengorse.



Highfield House

Virgins Lane, TN33 0JH.

Kathryn and Jeremy Field

A mixed large garden with a big vegetable plot with over a dozen types of fruit. It has a brick terrace, small formal ponds, numerous pots, mixed borders, secret paths and a conservatory.



The Almonry

High Street, TN33 0EA.

Battle Town Council

The Almonry has two walled gardens, one a display garden with lawns and full, colourful borders. The other is on two levels comprising a physic garden, planted with medicinal and culinary herbs. The lower portion is the Almoner's Pleasance Garden with lawn, pond, and a loggia used for drying herbs.



Pictured: left, Barrack Farm, right, Highfield House.

Saturday 20th June Winchelsea and Rye

£7.50 | 10.30am – 4pm

Find our pop-up
shop here.



Parking information

Parking in field off the
A259, opposite High Street.
For Rye Harbour, please use
the Rye Harbour Car Park.



Winchelsea Court Hall

High Street, TN36 4EA.

There will be refreshments
and access to a toilet here.



Kings Leap

Castle Street, TN36 4HU.

Philip Kent

This is a large hilltop
garden surrounded
by mature trees with
panoramic views
towards Rye, densely
planted for year round
colour and interest.

St Thomas the
Martyr Church
will be hosting
our retail pop-up
and plant sale.



White Cottage

Friars Road, TN36 4ED.

Caroline and
Jeremy Naylor

White Cottage is surrounded
by flower beds. It has an
enclosed courtyard garden
with a small lawn and some
paved areas. The beds
are slightly raised, mainly
comprising cottage garden
plants, which attract a range
of insects and pollinators.
The owners also maintain
a vegetable plot on the
allotments across the road.



Cleveland Place

Friars Road, TN36 4ED.

Sally and Graham Rhodda

A walled garden, with
a variety of perennials,
roses and clematis.
A large selection of
colourful containers
that change yearly.



New for 2026



2 Mariteau House

German Street, TN36 4ES.

Mary and Roger Tidyman

A sunny garden with
a large terrace by the
house from which a
sloping path leads down
throughout the different
areas. A central magnolia
tree, gravel garden and
two ponds add interest
to mixed herbaceous
borders and shrubs.



Pictured: top, Cleveland Place, middle,
White Cottage, bottom, 2 Mariteau House.



1 – 6 Kent Close

TN36 4EX.

Kent Close Residents

A communal garden that encircles two small blocks of flats, restored since 2023, featuring colourful borders and pot displays.



New for 2026



Officers House

Coastguard Square, Rye Harbour, Rye, TN31 7TS.

Thomas South

A town garden including drought-tolerant planting that wraps around an old coastguard officers house. Created by a local garden designer with immersive planting as a contemporary take on a coastal cottage garden. It includes seasonal highlights of irises, roses and geraniums. The rear garden just won a SGLD 2026 Garden Design award.

Pictured: left, Officers House, right Kent Close.

Tuesday 30th June Bexhill Old Town

£7.50 | 10.30am – 4pm

Find our pop-up shop here.



Parking information

Pay and display parking available at Manor Barn. Parking for The Small House will be on street.



The Manor Barn

De La Warr Road, TN40 2JA.

Directors Chris Madeley and Hazel Timpe

The Manor Barn sits within the beautiful Manor Gardens. Old Town Occasions Ltd, who run Manor Barn, will kindly offer refreshments in aid of the Hospice. The Manor Gardens are maintained by Rother District Council.



Chantry Farm

Church Street, TN40 2HE.

Edmund Bird and Harry Oseni

Dating back to the 16th century, Chantry Farm was a working farmhouse until the 1950s. It then became the Rectory for St Peter's Church until the 1990s. Since then, it's been a private home. The L-shaped walled garden includes lawns, herbaceous borders, rose beds, rockeries, a fishpond and a number of mature trees, including a liquid amber, foxglove tree and ginkgo.

Pictured: Manor Barn.



2 Orchard Close

Church Street,
TN40 2HD.

Karin MacKenzie

A triangular garden overlooking the church. The front path is bordered by lawn and perennials with some mature bushes and trees. The back was landscaped in 2023 providing a shingle area with raised beds and a perennial border, plus containers and new fruit trees. The plan going forward is to plant more drought resistant varieties.



St Peter's Churchyard

Church Street, TN40 2HE.

The churchyard is a calm and quiet place with a combination of formal and wild planting. A tranquil place to walk.

New for 2026



Holm House

9A High Street, TN40 2HA.

Jeff Dale and Catherine McDermott

Architect designed eco house completed in 2025 and located in the former kitchen garden of Linkwell House. It incorporates existing trees and a sea view with low maintenance planting to cope with its coastal position.



Pictured: Holm House.



Barrack Hall Allotments

Barrack Hall Park,
Belle Hill, TN40 2AP.

Barrack Hall Allotment Association

The site at Barrack Hall has been steeped in history over its 1,600 years. The allotments are now in a quiet corner, growing a wide variety of fruit, vegetables and flowers.

Pictured: The Small House.



Jasmine Cottage

Orchard Road, TN40 2DQ.

Debbie and Nigel Pollard

A modest, wildlife friendly, creative garden. Divided into areas featuring many trees, shrubs and flowers, designed to provide year round fragrance. A Moroccan themed summerhouse and plenty of surprises.



The Small House

Sandhurst Lane,
TN39 4RG.

Veronika and Terry Rogers

A tranquil one acre garden set on terraced slope amongst woodland, with herbaceous island beds, a wildlife pond, a meadow, and a vegetable patch.

Tuesday 7th July Cooden Beach and Little Common

£7.50 | 10.30am – 4pm

Find our pop-up
shop here.



Parking information

On street parking
available alongside
all gardens.



31 Cranston Avenue

TN39 3QG.

Linda and Tim Murray

This garden has been nurtured for nearly 40 years and reflects the changes over that time. The lawn has been replaced by paths, pots, sculptures, artworks, mosaics and a yurt. The garden is loose but densely planted.



66 Cranston Avenue

TN39 3NN.

Karen and Steve Hewgill

A large, mature and quirky town garden with a new 14ft lighthouse. There is a vegetable and fruit garden, a wildflower area and two ponds, as well as lots of trees, shrubs and flowerbeds.



New for 2026



20 Sutherland Avenue

TN39 3QR.

Tony and John

Large town garden, featuring a chicken run, a walled courtyard, an orchard, a pond, mature ornamental beds, trees, a vegetable plot and a greenhouse.



29 South Cliff

TN39 3EH.

Kaye Colyer

This cliff-edge garden feels woven into the landscape. It has a combination of stones, shells, and tough coastal plants. This garden, filled with red valerian, is a magnet for pollinators. With plenty of different plants and flowers.

Pictured: 20 Sutherland Avenue.

Pictured: 31 Cranston Avenue.



Golf Lodge

199 Cooden Sea Road,
TN39 4TR.

Robert and Joey Mitchell

Large lawns, surrounded by shrubs and flower beds bursting with colour.



Earlsfield Court Care Home

Brooklands Road,
TN39 4FQ.

Earlsfield Court Care Home

The gardens at Earlsfield Court are a cherished feature. They offer a variety of vistas, ample seating and a calming water feature. There will be entertainment, along with refreshments kindly arranged in aid of the Hospice.



Shambles

202 Cooden Drive,
TN39 3AH.

Sylvia and John Brady

This garden is in its fourth year and has an eclectic mix of trees, shrubs and perennials. It has something for every season with an emphasis on encouraging wildlife. It has a small pond and a variety of sculptures which appear throughout the garden.

Pictured: Shambles.

Tuesday 14th July Hastings

£7.50 | 10.30am – 4pm

Find our pop-up shop here.



Parking information

On street parking available alongside both gardens.



Silverdale

1 Amherst Road,
TN34 1TT.

Lisa Byrne and
Bobby Lancaster

A stunning garden with an expanse of lawn surrounded by borders bursting with tropical and traditional planting. There are quiet spaces to enjoy the fabulous views across Hastings.



Pictured: left, Silverdale, right Tudor Court.



Tudor Court

90 Priory Avenue,
TN34 1UL.

Tim Webb and Alun Francis

With fantastic views across Hastings, this garden celebrates a wide variety of plants. Including some unique specimens, many ornamental grasses to complement the sub-tropical planting, as well as many herbs and a comprehensive vegetable patch.

Saturday 18th July and Sunday 19th July St Leonards on Sea

£7.50 | 10.30am – 4pm
Wristband valid for both days.

Find our pop-up shop
here on Saturday only.



Parking information

On street parking
available alongside
all gardens.



Open on Saturday

St Michael's Hospice

25 Upper Maze Hill,
TN38 0LB.

Our Hospice Gardener and team of volunteers ensure there is colour and variety throughout the year. The gardens have plenty of seating to enjoy the quiet. Different areas include tropical beds, a sensory garden, herbaceous borders, woodland, greenhouses, lawns and sculptures.

"When my Dad was in the Hospice, he loved looking out at the flowers and birds. It was important for him to still feel the outside world." Family member of hospice patient.

Don't miss **Q&A** with **Jean Griffin**, gardening expert, from BBC Radio Kent. Happening at **11.30am, 1pm and 2.30pm** at the Hospice on Saturday 18th July. (No booking required)



Open on Saturday

83 Pevensey Road

TN38 0LR.

Paul Oxborrow

This walled garden is accessed through a beautiful conservatory into the Victorian kitchen garden, laid out for vegetables, fruit and cut flowers. The flower garden has three parts, one of which has a large pond. There are two glasshouses, a herbaceous border by the larger lawn and a summer house, behind which is the chicken run.



Open on Saturday

18 The Green

TN38 0SU.

Shirley Carey

Backing onto the Green Lawn Tennis Club, this garden is divided into two sections with a rose arch at its centre. The flower beds around the edges of both lawns contain a variety of shrubs and flowers, plus it has a small pond.

Pictured: St Michael's Hospice.



Open on Saturday

Delphia House

11 Branksome Road,
TN38 0UA.

Baroness Fookes

The garden was redesigned 26 years ago in collaboration with leading garden designer, the late Robin Williams. Characterised by sweeping curves, the garden includes a majestic yew with a tree seat and a circular fruit garden, entered by a moon gate. There are also one or two new features since last year.



Open on Saturday
and Sunday

Woodland Cottage

15 Hollington Park Road,
TN38 0SE.

Alan and Liz Jeffries

A large multi-level garden offering a haven to wildlife. Three large mature trees cast shadows over the flower beds and wildlife pond. It hosts permaculture inspired no-dig vegetable beds, a mixed native hedge and forage garden. On Saturday, this garden will serve refreshments and will showcase local artists, with stalls selling their work.



Open on Saturday
and Sunday

19 Hollington Park Road

TN38 0SE.

Michele Duke

A natural garden with gentle woodchip paths, a small orchard in a sea of grasses, and self-seeded flowers. Raised beds and a greenhouse provide produce for the kitchen, whilst the flowerbeds are a haven for pollinators. A wildlife pond and large patio offer quiet relaxation.



Open on Saturday

31 Fernside Avenue

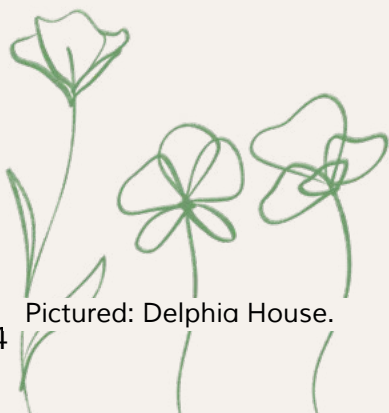
TN38 0UU.

Greta Romaine

With a wide lawn, summer houses and a view across the valley, this garden is perfect to spend time in. Part of the garden is known as Fernside Halt, with railway seating, a real green flag, railway hat and lanterns.



Pictured: left, Woodland Cottage, right, 31 Fernside Avenue.



Pictured: Delphia House.



Open on Saturday

33 Fernside Avenue

TN38 0UU.

Rita Drobner

The garden aims to be wildlife friendly yet productive. It features backyard chickens, rain-water capture, and hot and cold composting. Hand lenses and microscopes are available to look at small creatures from the pond, the sandarium and log and leaf-litter piles. Free identification sheets for the Big Butterfly Count will be available.



Open on Sunday

74 Tower Road West

TN38 0RL.

Christopher and Christiana Meaden

There's something for everyone in this large garden with vegetable plots, lawned areas with an abundance of bedding plants, mature trees and a multitude of areas to sit and appreciate the calm. Light lunches and refreshments are available to purchase.

Saturday 8th August Sandhurst

£7.50 | 10.30am – 4pm

Find our pop-up shop here.



Parking information

On-field parking available near The Old Priest House, on-field parking also available near Ringlehurst.



The Old Priest House

Bodiam Road, TN18 5LT.

Robin and Barbara Simmons

This mature garden is over an acre, filled with a koi pond, vegetable garden and herbaceous beds. It also has some vintage-modern cars on show – there's something for everyone.

New for 2026



Ringlehurst

Rye Road, TN18 5JQ.

Jill Oliphant

This is a medium sized cottage garden with large planting beds. It also has a greenhouse, a kitchen garden, a very small orchard and free-range bantams, including a bantam cockerel. There is a wildlife pond, shrubs, perennial flowers with a few annuals, lots of grasses and plenty of places to sit.



Pictured: Ringlehurst.



New for 2026



Windmill Cottage

Rye Road, TN18 SJQ.
Fiona and William Bradley

This is a new garden created in the last five years. Through generous donations, hard work and trial and error, the owners have transformed it from nothing into a thriving beautiful space. It's an experimental garden which evolves and changes regularly.



Ringle Crouch

Crouch Lane, TN18 5PA.
John and Rosie Broadbent

This garden surrounds a beautiful 17th century house. It has mixed borders, a vegetable garden and an impressive walled garden.



Pictured: left, Ringle Crouch, right, Windmill Cottage.

New for 2026



The Cottage

Ringle Oast, Crouch Lane, TN18 5PA.

Rosemary Palmes

The Cottage has a lovely semi-formal walled garden, herbaceous borders with climbing roses and areas of wild grasses leading to woodland area. With lots of seating near the house to enjoy the view.



New for 2026



Bayford House

Queen Street, TN18 5HR.
Joanne and Kevin Tucker

This is a Grade II listed house surrounded by different garden areas, including; a prairie style front garden with a variety of grasses and cottage garden favourites; an old orchard with apple, pear, damson and plum; a cutting garden with annuals, perennials and dahlias and a woodland area with native trees. Plenty of seating around the garden.



Pictured: left, Bayford House, right, The Cottage.

Homeowner Over 55? Thinking of accessing the current value in your home?

- ✓ Property purchase
- ✓ Home improvements
- ✓ No affordability requirements
- ✓ Paying off debts/mortgages
- ✓ Supplement/replace incomes
- ✓ No mandatory monthly payments



For qualified and impartial advice call Katie Wilkinson on

07970 398 669

katie@vivaretirementsolutions.co.uk

www.vivaretirementsolutions.co.uk/sussex-equity-release



A lifetime mortgage is a long-term commitment which could accumulate interest and is secured against your home. Equity release is not right for everyone and may reduce the value of your estate. Think carefully before securing other debts against your home. A fee of £995 is only payable on completion of your Lifetime Mortgage if you decide to proceed with an application (on successful release of funds to you).
Registered Office: Viva Retirement Solutions LTD - 4 Severn Vale, London Colney, St. Albans, AL2 1TE. FCA number: 604664.

Inglewood Gardens,
St Leonards On Sea,
East Sussex,
TN38 9SA.

Your Vision, our venue - unforgettable events start here



At The Manor Barn, we believe your Wedding day should be as unique as your love story. That's why we don't offer rigid packages - we offer flexibility. Starting with our base hire, then you can customise your day with additional services to match your vision. It's your day, and we're here to make it unforgettable.

The Manor Barn,
Manor Gardens, De La Warr Road,
Bexhill on Sea, East Sussex, TN40 2JA
Tel: (01424) 220231
www.themanorbarnbexhill.co.uk



Why not visit your local nursery?
Specialists in alpines, troughs & crevice planting
Plenty of usual and unusual plants to fill your garden – ferns, camellias, shrubs
Helpful friendly staff, happy to give advice
Composts, pots and seasonal bedding
Enquire about our trough planting workshops

Rotherview Nursery, Ivyhouse Lane
Three Oaks, Hastings, TN35 4NP
01424 756228 www.rotherview.com



Installers of all types of domestic
& commercial fencing & gates
01732 920122 • 01892 335566
tateandtonbridgefencing.com



- WINDOW CLEANING • GUTTER CLEARANCE
- GUTTER/SOFFIT & FASCIA CLEAN • CONSERVATORIES
- PATIO & DRIVEWAYS • SOFT WASHING

Please call or email for your free quote

01424 320032

pete@clearchoiceexteriorcleaning.com

www.clearchoiceexteriorcleaning.com 41

NORTHAM DIY & GARDEN HOMEHARDWARE

01797 252162
FOLLOW US ON



WE HAVE AN EXTENSIVE GARDEN DEPARTMENT WITH A BEAUTIFUL COURTYARD FILLED WITH POTS, PLANTS, FURNITURE AND ALL OTHER GARDEN ESSENTIALS!



MONDAY - FRIDAY 8 - 5PM SATURDAY 9 - 4PM
FRIENDLY FAMILY RUN BUSINESS

NORTHAMDIYANDGARDEN@GMAIL.COM

The Old Rose Nursery

Rose Specialist

A traditional nursery specialising in all types of roses, carefully selected to offer the best of the old and new varieties. Select your plants in a pleasant and unhurried atmosphere at this successful family business established since 1966. Expert advice always at hand.



Beales Lane/Quickbourne Lane, Nothiam TN31 6QY
Tel: 01797 252680

Property Sold Properly



THE HOME OF
Personal Estate Agency

Adam Toubi

Partner Agent

Hastings & St Leonards

T: 01424 793397

E: adam.toubi@theagencyuk.com

Why Sellers Choose Adam

Professional photography, video and social media.

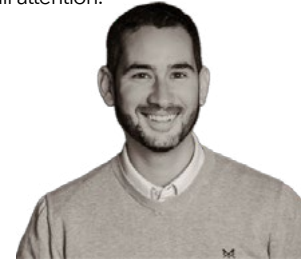
One to one support from start to finish.

Clear communication, no jargon or hard sell.

Tailored strategy for every home.

Widespread marketing on Rightmove & Zoopla.

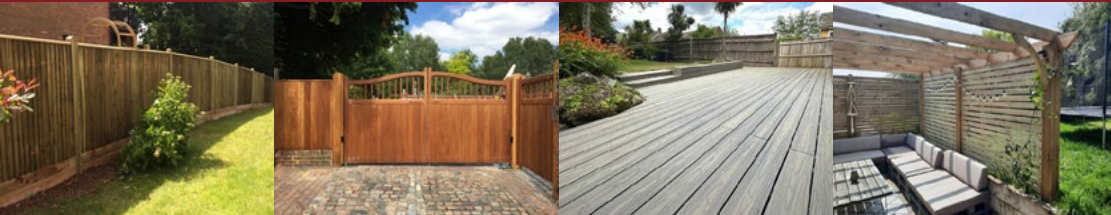
Each sale gets full attention.



TATE FENCING

www.tatefencing.co.uk

Fencing | Gates | Decking | Trellis | Pergolas | Sheds
Frant 01892 750230 | Flimwell 01580 879900
sales@tatefencing.co.uk



Four Varieties of
Organic Plant Food,
made from plants for
plants, here in East
Sussex
Enter OGSTM10 for a
10% discount online



www.goodlifegateway.com
Contact@goodlifegateway.com



BOOKER & BEST LTD.

BOOKER & BEST ARE PROUDLY SUPPORTING ST.MICHAEL'S HOSPICE



SERVICES WE OFFER!



BUILDING WORKS

- General Home repairs and maintenance
- Conversions and refurbishments
- Extensions and alterations



PLUMBING

- Fixing leaks and repairing burst pipes
- bathroom and kitchen refurbishments
- boiler installation and repairs
- 24/7 response for urgent plumbing issues



LANDSCAPING

- All types of fencing
- Decking
- Paving and patios



ELECTRICAL

- Installing and repairing outlets, switches, and lighting fixtures
- Home wiring and rewiring for renovations
- Electrical troubleshooting and repairs
- Home energy audits and efficiency upgrades

HOME REPAIRS MADE EASY

Complete property maintenance from your local trusted building company-All at extremely competitive rates!



01424 434391



www.bookerbest.co.uk